



ABB E-mobility

October 2022



ABB: An electrification leader in power and automation technologies

Leading market positions in utility, industry, transportation and infrastructure businesses



~100,000

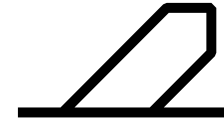
Employees Globally

20,000

U.S. employees

~40

U.S. manufacturing &
assembly locations



\$29

Billion revenue

Major markets

Utilities, industry, transportation
and infrastructure



Present in **100+** countries



135+ years of technology leadership in **electrification**
Merger in 1988 of Swiss (BBC, 1891) and Swedish (ASEA, 1883)
engineering companies

Single "A" credit rating

Global HQ Zurich / US HQ Raleigh

ABB E-mobility – Global Footprint

Smart, reliable EV charging technology, backed by deep experience and service excellence.

680,000

EV CHARGERS

Sold worldwide, including 30,000 DC fast chargers across more than 85 countries.

7 to 600 kW

WIDE PRODUCT RANGE

From AC to DC fast charging, tailored to every public, commercial and fleet charging operation.

13

YEARS' EXPERIENCE

Deploying advanced, connected EV charging systems in every environment – for networks, fleets, OEMs and utilities.

1000+

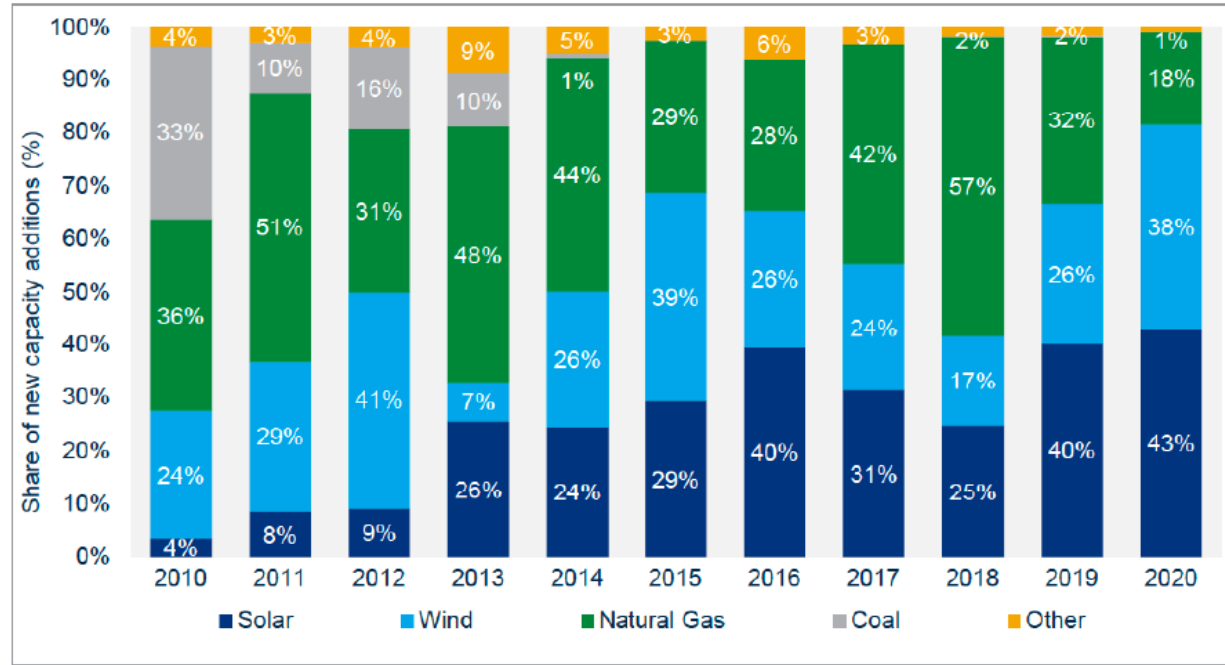
TALENTED EMPLOYEES

Dedicated to ABB's E-mobility business including more than 100 in North America from R&D to service.



Market Adoption of EVs

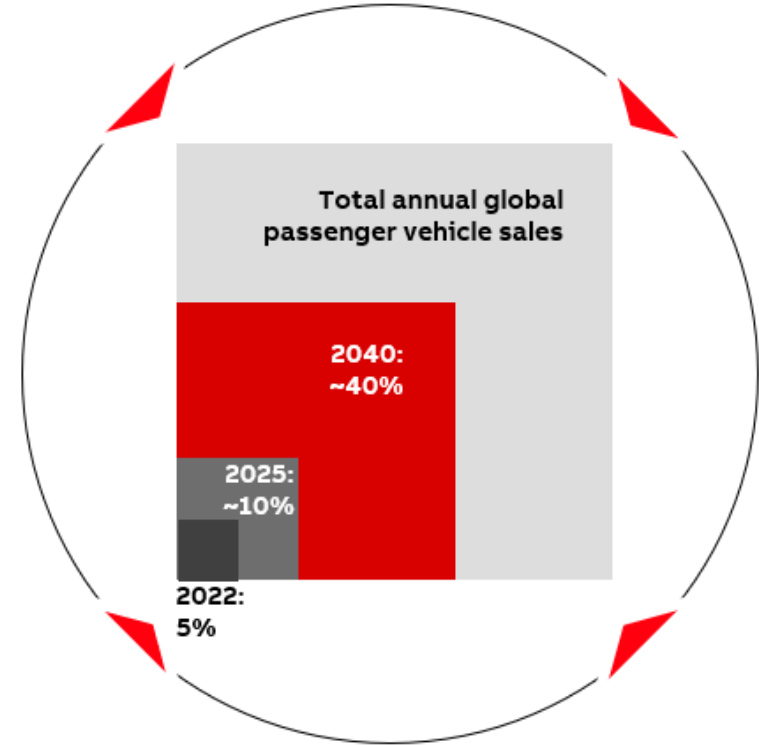
New U.S. electricity-generating capacity additions over the last decade



Source: Wood Mackenzie, Federal Energy Regulatory Commission (for all other technologies)



© 2021



Note: Forecasted penetration rates aggregated from recent analyst reports (BNEF, IHS Markit)

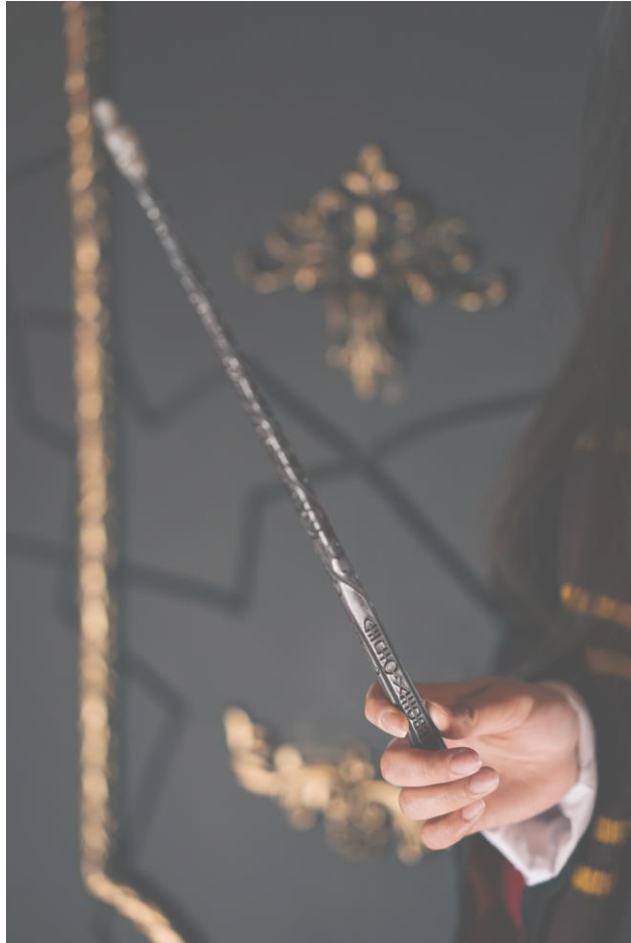
Drivers Expect Chargers to Work, Every Time



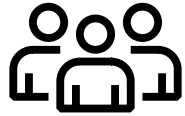
>97%
uptime per
port

How do we get there?

Achieving 97% uptime



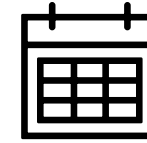
Achieving 97% Uptime



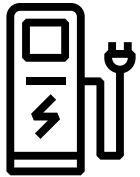
Knowledgeable, trained **technicians** in the proximate geographic region of the charger



24/7/365 **connectivity and monitoring** of the operations of chargers



Scheduled **preventative maintenance**



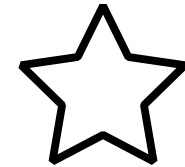
Sufficient local inventory of **spare parts** and logistics infrastructure



Detailed **documentation and procedures** to troubleshoot and repair chargers



24/7/365 **service call center** to receive service or repair requests with service ticketing process



Capability to execute **detailed service campaigns** between owner, operator, and manufacturer

ABB